



Connecting Aged Care and Primary care

Dr Lenore de la Perrelle

for Murray PHN August 2025



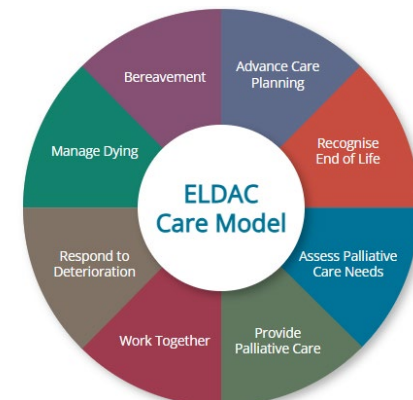
Acknowledgement of Country

ELDAC acknowledges the Traditional Custodians of the many ancestral lands and waters throughout Australia. We recognise the knowledge, strength and resilience of Aboriginal and Torres Strait Islander Peoples, and their continuing spiritual and cultural connections to land, water and community. ELDAC pays respect to Elders past, present and emerging.

About ELDAC

The **End-of-Life Directions for Aged Care (ELDAC)** project is one of the national palliative care projects that aims to improve the quality of palliative and end-of-life care provided to older Australians in the aged care sector.

Funded by Department of Health, Disability and Ageing.



Digital access to the project resources via the ELDAC website <https://www.eldac.com.au/>

ELDAC Care Model

- Interactive model components
- Linked to information and resources
- Free to access, for all aged care and primary health professionals



Tailored information

- Different roles
- Levels of experience
- Learning Modules
- Learning needs assessment
- Clinical and practice information
- Clinical assessment tools
- Updates on new Aged Care Act



Toolkits for all

- Residential Aged Care
- Primary Care toolkit
- Dementia
- Allied Health
- End of life Law
- Linkages
- Home Care
- Managing risk



All with videos, online training, downloads, links to other websites and educator resources.

Our products for aged care

- Self Care Room
- Talking with Families
- Understanding Diversity
- My Care Matters
- Digital Dashboard
- Addressing the standards
- Home Care App
- Home Care search



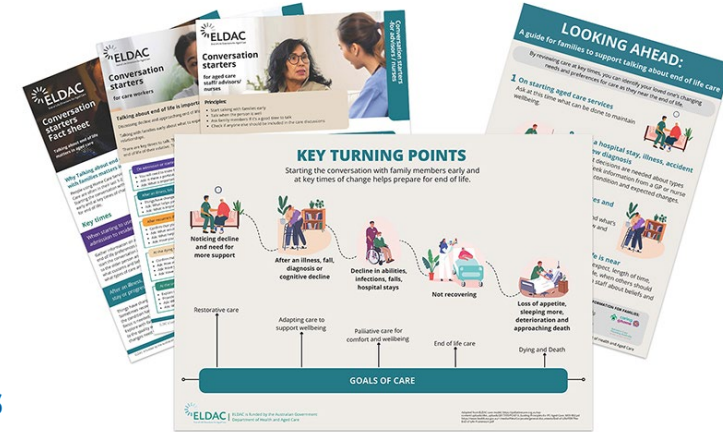
Some examples



Supportive and Palliative Care Indicators Tool (SPICT™)



The SPICT™ is used to help identify people whose health is deteriorating. Assess them for unmet supportive and palliative care needs. Plan care.



palliAGED Practice Tips for Nurses in Aged Care

Clinical Care

This section of the Residential Aged Care (RAC) Toolkit delivers information on how to provide palliative care and advance care planning for people living in residential aged care and for their families.

Download Factsheet
(712kb pdf)

Watch the Toolkit Videos

- Advance Care Planning
- Assess Palliative Care Needs
- Work Together
- Manage Dying

- Recognise End of Life
- Provide Palliative Care
- Respond to Deterioration
- Bereavement

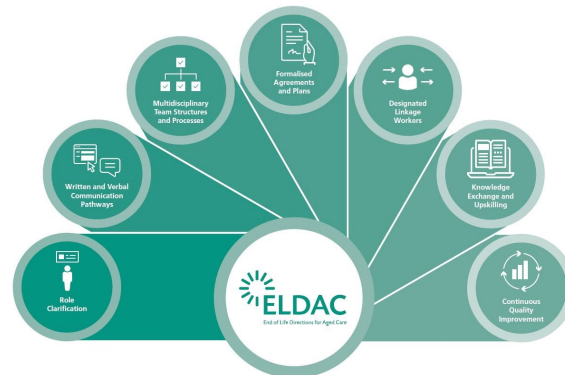
Toolkit Educational Videos



The Residential Aged Care Toolkit educational videos will assist you to:

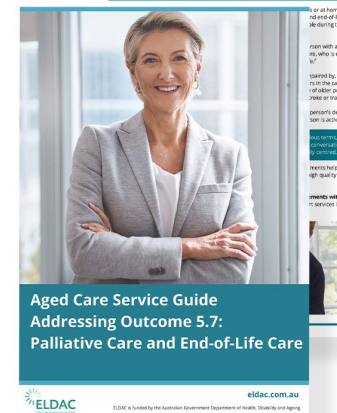
- Recognise End of Life
- Assess Palliative Care Needs
- Work Together
- Manage Dying

Educational Videos



Understanding palliative care and end-of-life care within aged care

Addressing Outcome 5.7: Activities



Outcome 5.7: Provider Responsibilities

Take time to reflect on where your service stands with end-of-life care practices. Choose actions from the activity checklist below

Outcome Statement: The provider must recognise and address the needs, goals and preferences of individuals for palliative care and end-of-life care, and must preserve the dignity of individuals in those circumstances.

ELDAC Care Model: The ELDAC Care Model helps services and staff to understand the importance of person-centred care that respects the individual's dignity and choices, even as needs change over time.

ELDAC Linkages Program: The ELDAC Linkages Program offers a structured approach to reviewing your service's activities. A team of facilitators help aged care facilities to lead, learn from, and work with palliative care and advance care planning experts in their local area to make services to provide the best possible quality of care for older people and their families at the end of life.

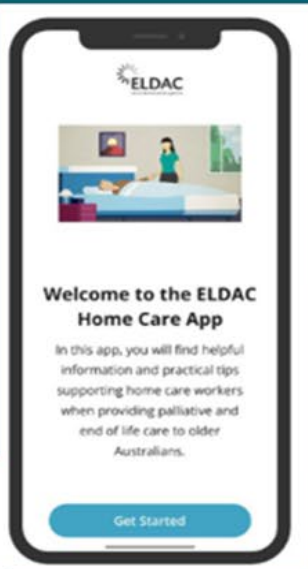
ELDAC Advance Care Planning and Palliative Care Organisations Audit: Being recognised as an ELDAC Advance Care Planning and Palliative Care Organisation requires they may need to review policies or processes or develop new ones. These audits can also be shared with the Residential Aged Care Toolkit Home Care Toolkit.

In addition, the following toolkit contains resources that speak to the dignity of individuals and choices, as well as end-of-life care.

- ELDAC Care Model
- ELDAC Linkages Program
- ELDAC Advance Care Planning and Palliative Care Organisations Audit
- ELDAC Home Care Toolkit
- ELDAC Bereavement Toolkit

About ELDAC

10 top ELDAC picks



Stay Connected with ELDAC

Visit us: www.eldac.com.au

Email us: eldac.project@flinders.edu.au

Sign up to [ELDAC News](#) or connect with us on social media:

 ELDAC.agedcare

 eldac-aged-care/