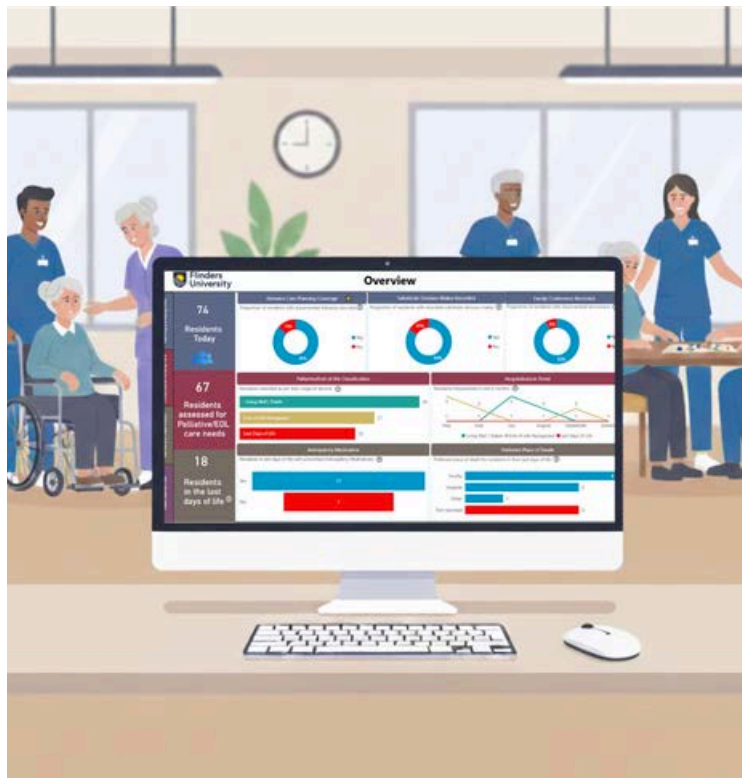


# What is the ELDAC Digital Dashboard

The ELDAC Digital Dashboard transforms routinely collected clinical data into a structured, evidence-based view of end-of-life care. The Dashboard uses your existing clinical and care system data. This enables services to identify gaps early, demonstrate quality systematically and support better outcomes for residents and families.



Makes use of  
existing data



Available at  
no cost



Supported by  
ELDAC program  
of work

## How this helps you

- Identifies residents with emerging palliative care needs and those in their last days of life
- View advance care planning status and family conversations
- Monitor hospitalisation trends and residents nearing end of life



## What to do next

- Scan the QR code to explore the ELDAC Dashboard today.

