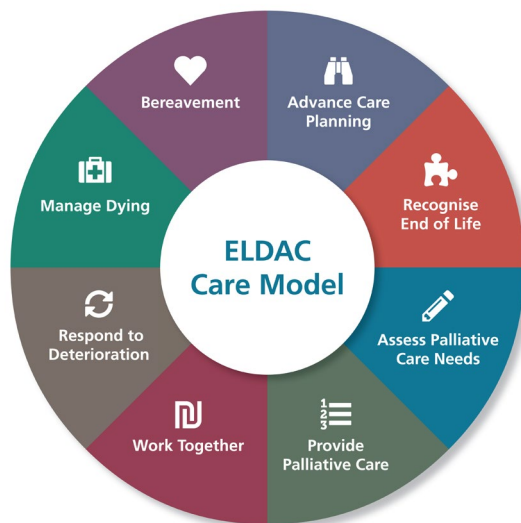










## What is the ELDAC Digital Dashboard?

The ELDAC Digital Dashboard (the dashboard) is a system application designed to provide you a comprehensive framework for palliative and End of Life [EOL] care planning and provisioning. The dashboard is based on the ELDAC Care model, and it can be integrated into clinical care systems of aged care services.



### The Dashboard tracks the following key elements of EOL care

 <b>Advance Care Planning</b>	<ul style="list-style-type: none"> <li>Residents with/without an ACP document.</li> <li>ACP review date.</li> <li>Substitute decision maker review date.</li> </ul>
 <b>Recognise End of Life</b>	<ul style="list-style-type: none"> <li>Residents assessed/not-assessed as being in their EOL stage.</li> </ul>
 <b>Assess Palliative Care Needs</b>	<ul style="list-style-type: none"> <li>Residents across different stages of their decline trajectory.</li> </ul>
 <b>Provide Palliative Care</b>	<ul style="list-style-type: none"> <li>Residents with/without a palliative care plan.</li> </ul>
 <b>Work Together</b>	<ul style="list-style-type: none"> <li>Residents receiving some form of expert palliative care input.</li> <li>Family conference and review dates.</li> </ul>
 <b>Respond to Deterioration</b>	<ul style="list-style-type: none"> <li>Hospitalization trend and reasons.</li> </ul>
 <b>Manage Dying</b>	<ul style="list-style-type: none"> <li>Residents on EOL care pathway or plan.</li> </ul>
 <b>Bereavement</b>	<ul style="list-style-type: none"> <li>Residents or families provided with some form of bereavement or grief support.</li> </ul>
<b>Death related data</b>	<ul style="list-style-type: none"> <li>Place of death, resident's stage classification on the day of their death.</li> </ul>

### The Dashboard helps

**Clinical staff:** Prompt & prioritise care, reduce gaps in documentation.

**Managers:** Track performance and carry out audits/self-assessment.

**Organisation:** Report service level EOL care.

## Why aged care IT systems should embed the ELDAC Digital Dashboard into their system.



- Palliative care and end of life care are a core part of aged care practice. The Royal Commission into Aged Care Quality and Safety and government are calling for data on palliative care and end of life care, and the ELDAC Digital Dashboard can enable your IT system to meet the reporting needs of your aged care clients.
- Embedding the ELDAC Digital Dashboard in your system will ensure you have a more comprehensive and attractive product for the market.
- Aged care services and facilities want to use the dashboard and to see it available in their IT system.
- The data variables captured and presented by the dashboard are important for reporting purposes and to support clinical care.
- The data variables have been developed by Flinders University staff as part of ELDAC, which is being funded by the Australian Government Department of Health to support aged care and palliative care practice.
- The work in identifying the data variables and relationships for reporting has been done by ELDAC and is based on best practice evidence, and government policy.
- You can get access to the dashboard prototype codes, implementation guide, and the data variables guide which describes the data variables and their relationships from the ELDAC Flinders University team, making it an easy build, free of charge.

***“We see this as something that is really useful for our facilities, our clients. It adds a whole wealth of information on that end of life period.”*** – IT company feedback after integrating the ELDAC Digital Dashboard.

Funded by the Australian Government Department of Health, ELDAC (End of Life Directions for Aged Care) is a free online resource for aged care workers and health professionals caring for older people at the end of life.

**Need more information?**  
**[eldac.project@flinders.edu.au](mailto:eldac.project@flinders.edu.au)**

## Getting started: ELDAC Dashboard Build

**So, you've decided to include the ELDAC Digital Dashboard in your IT system. Congratulations, this will be of great value to your clients and will help them with care planning and reporting.**

### We've put together a quick guide to get you started.

1. Make sure you have permission from Flinders University to build the dashboard using the map of variables and reports. They will provide you with **the Data Variables Guide** and the **Clinical Implementation Guide**.
2. Check what variables already exist in your system that match those specified in the **Data Variables Guide**.
3. Identify any specific tools or documents that you already capture in your system that could show that relevant information is being collected (e.g. SPICT™, Advance Care Directive form, End-of-Life pathway).
4. Identify any missing variables in your system and schedule their inclusion in the system.
5. Create an information architecture for the dashboard.
6. Code to extract required data variables from your clinical system to the dashboard.
7. Complete programming to create the specified relationships between variables to create dashboard displays and reports.
8. Organise a trial of data input and data transfer of the system data variables to the dashboard.
9. Test performance of dashboard displays and specified reports of dashboard elements.
10. Develop email and print capabilities for reports as required.
11. Consider customizing your system by including site specific links and tips.
12. Prepare a support document for services and customers on the dashboard.



**Need more information?**  
**[eldac.project@flinders.edu.au](mailto:eldac.project@flinders.edu.au)**

## Short report: ELDAC Digital Dashboard trial

To support aged care workers in planning and providing good quality palliative and end of life care, the ELDAC team at Flinders University created an integrated palliative care web platform known as the ELDAC Digital Dashboard (the Dashboard).

### Introduction

The dashboard is an integrated palliative care web platform developed based on the Aged Care quality standards, the National Palliative Care Standards, and the evidence based ELDAC Care model. The ultimate aim of the dashboard is to build workforce capability around palliative care so older Australians receive person centered care at the end of their lives. One of the unique abilities of the dashboard is that it uses existing data that is captured within an aged care service's Clinical Data Management System (CDMS), processes it, and provides a one-stop shop for clinicians to graphically view and track all relevant End of Life (EOL) care activities and processes of their residents/clients. There is no need to feed data to the dashboard, which makes it ideal for integration into existing CDMS as opposed to being a standalone piece of software with additional management and application requirements.

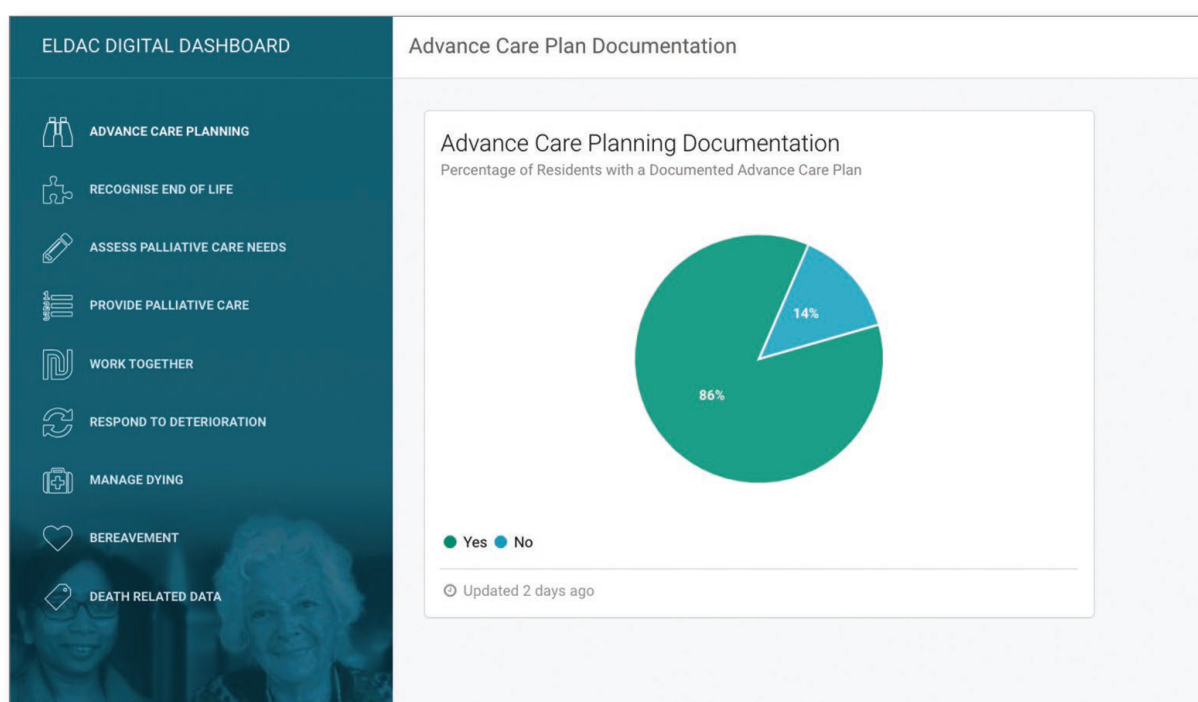


Figure: Snapshot of the ELDAC Digital Dashboard prototype

## Dashboard integration and implementation

The dashboard has been integrated into the systems of four aged care IT providers that offer their system/platform to various residential and home care services across Australia. We took this opportunity to examine how the dashboard would function in the real-world setting, and what aged care clinicians thought of this novel technology. In the second half of 2020, we conducted a 3-month implementation evaluation study involving services that had access to the newly integrated dashboard. Care managers, nurses and even admin staffs used the dashboard for up to 8 weeks of trial period with the support of a site based 'Dashboard champion'.

### Trial results

At the end of the trial period, over 40 staff members from 14 sites participated in a focus group or interview sessions to share their experience of dashboard use. The dashboard was useful and relevant to the care practices of the aged care setting and staff felt that it helped them organise end of life care. While the dashboard was used in an extremely challenging period marked by COVID19 concerns, time and resource pressures, competing priorities, and a relatively low-level of technology readiness within the sector; staff and managers reported that the engagement with the dashboard facilitated family conversations about a resident's decline and care needs. This appeared particularly when recognition of gradual EOL decline was clearly presented to the team.

The dashboard's ability to show what is happening at the client level, as well as service level, was found to be useful by care managers for the purposes of audit, compliance and to assure accountability in the EOL processes provided at their service. For services where the role of EOL and palliative care were still evolving, having access to the associated suite of ELDAC resources was also seen as valuable. Having a site based 'Champion' to drive the early implementation and use of the dashboard was seen as crucial. These findings are very promising and show that technological innovations such as the ELDAC Digital dashboard can support staff and services in identifying and responding to an older person's needs as they move into the last months, or year, of life as well as responding to specific palliative care needs.

**For more information about the  
ELDAC digital dashboard please contact  
[eldac.project@flinders.edu.au](mailto:eldac.project@flinders.edu.au)**